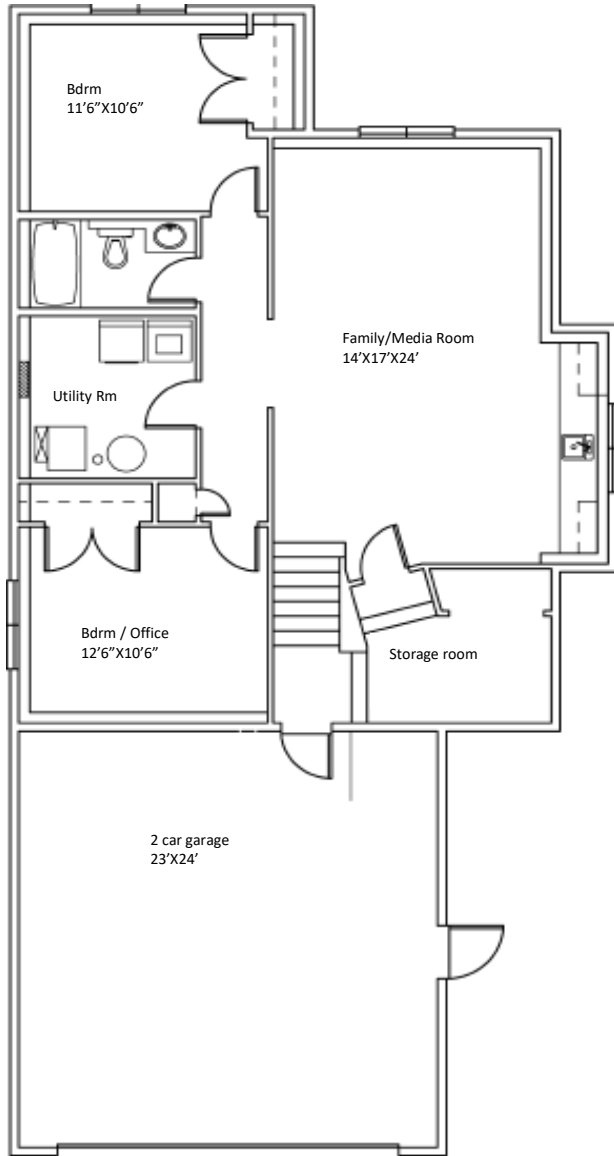
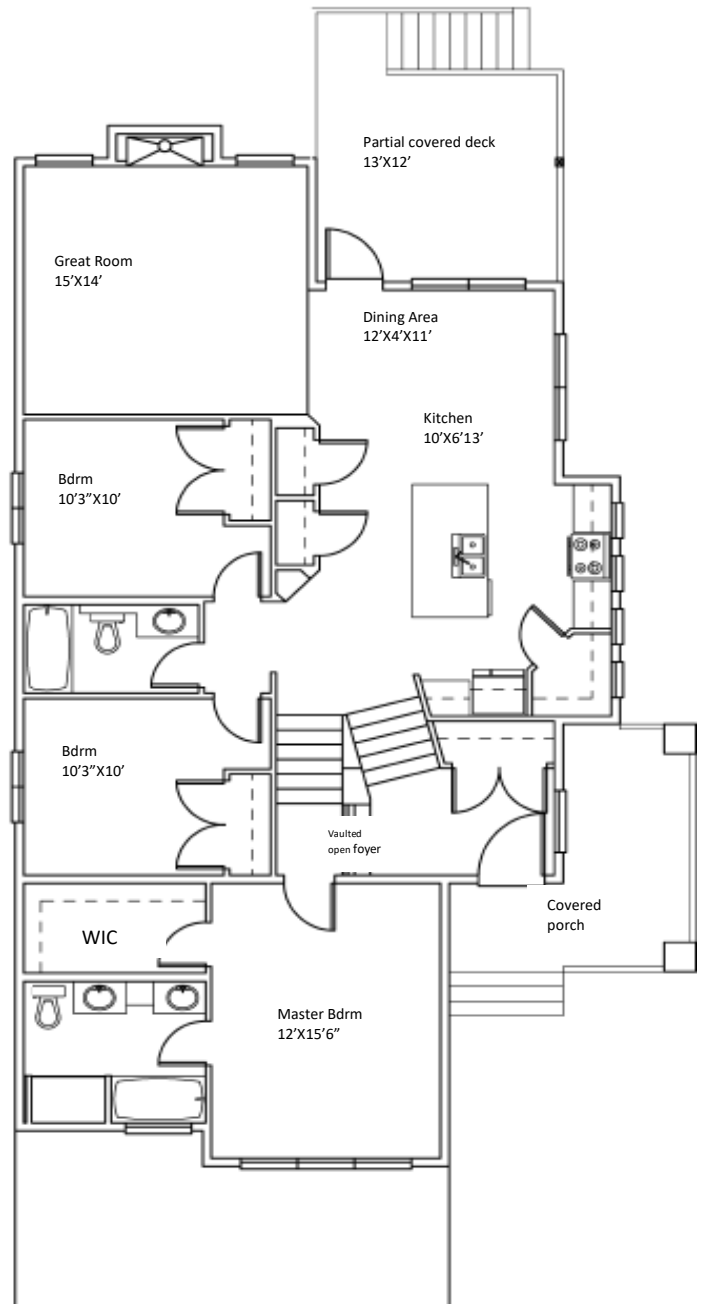


Black Bear

QUALITY HOMES LTD



"Tudor II"
1488 sqft Modified Bi-Level



- open concept design
 - basement in-floor heating hookups
 - 9' basement ceilings
 - 10' main floor ceilings
 - coffered master bedroom & great room ceilings
 - garage finished & primed
 - roughed-in central vacuum system
 - upgraded fixtures & appliances
 - granite or quartz countertops
 - E&OE
- *modifications may not be shown