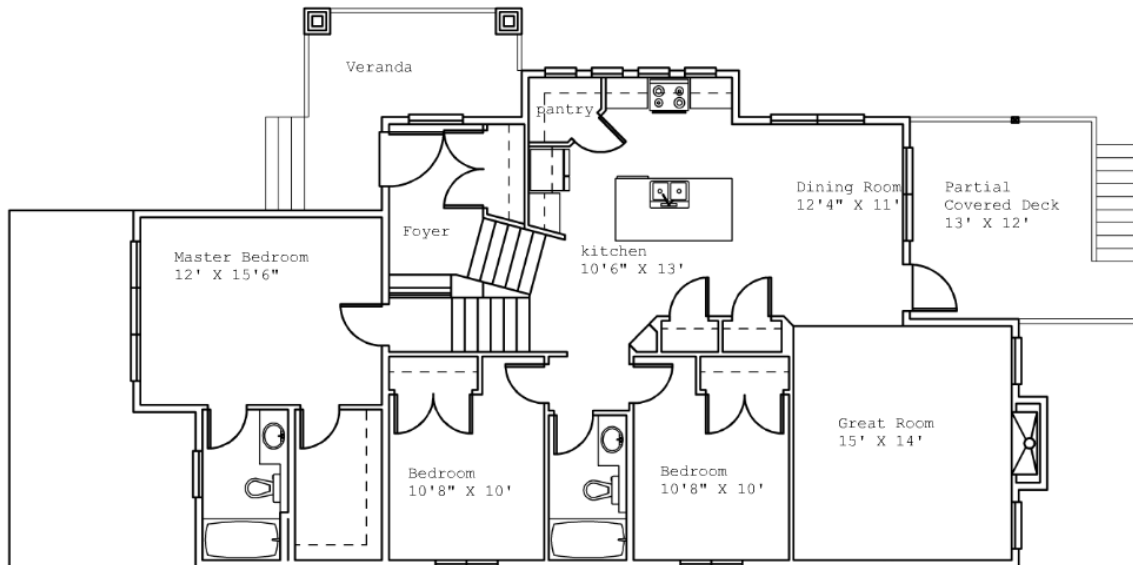
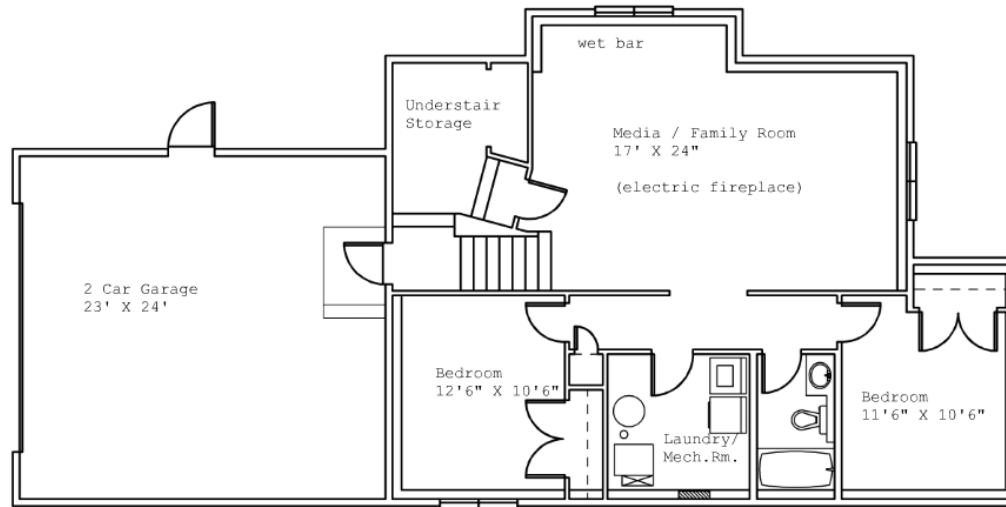


"Tudor"

1468 Sq.Ft. Modified Bilevel



- open concept design
- fully developed
- front & back landscaping w/gravel parking pad
- basement in-floor heating
- 9' basement ceilings
- 10' main floor ceilings
- coffered master bedroom & great room
- garage finished & primed
- roughed in central vacuum
- upgraded fixtures & appliances
- granite kitchen countertops (in some models)

* E&OE
* modifications may not be shown